

ULTRA-PORTABLE PROJECTORS EB-1776W/1771W/1761W/1751

EPSON
EXCEED YOUR VISION



WORLD'S SLIMMEST 3LCD PROJECTOR. LARGER THAN LIFE PERFORMANCE.

Epson presents the world's slimmest, high performance 3LCD projectors, designed for professionals on the move. With these advanced features such as real-time auto vertical and horizontal keystone correction, split screen feature, motion playback via USB function and Epson's latest iProjector, the EB-1700 series is all set to deliver powerful presentations wherever your business takes you.



EB-1751 / EB-1761W / EB-1771W



EB-1776W



WiFi



iProjector



Split Screen



3 In 1
USB Display



Real-time Auto
V&H Keystone
Correction



Lightweight
1.7

ENGINEERED FOR BUSINESS

World's Slimmest, Ultra-Portable

Weighing only 1.7kg and with a height of 44mm, it has a super slim chassis to fit in any laptop bag.

Projection Flexibility

With real-time auto V&H keystone correction, the advanced algorithm displays a corrected image in less than a second.

Split Screen Versatility

Inputs from two sources can be projected side-by-side using a single projector for richer presentations.



Source: FutureSource Consulting

Epson's latest 3LCD projector series is engineered to make mobile presentations easy. These models are compact and feature advanced technology, including automatic keystone adjustment that corrects images in less than a second, allowing you to concentrate fully on making impactful presentations.



Deliver Mobile Presentations Anytime

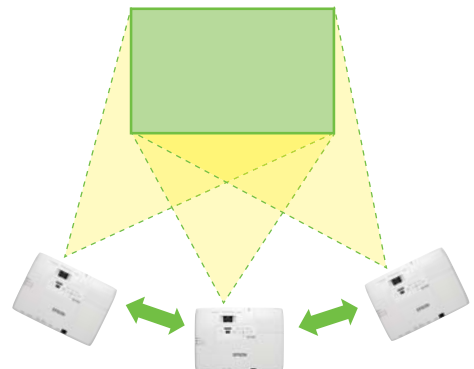
The world's slimmest, ultra-portable, 3LCD projector is engineered with convenience in mind. Weighing at most 1.71 kg and 44 mm thick (excluding the feet), these models make mobile presentations easy and hassle free. With its 3,000 lumens light output, you can enjoy bright images indoors or outdoors. Projectors in this series are designed with three grip lines at the edges, making them easier and safer to transport.



Experience Projection Versatility and Set-Up Flexibility

These projectors provide more advanced, real-time auto vertical and horizontal keystone correction*. You can conveniently position the projector anywhere in the room. Simply turn on the power and direct the projector towards the screen or wall, and the image will be corrected automatically in no time.

Real-time keystone adjustment allows the projector to display the corrected image less than a second after the projector is moved. This adjustment speed lets you display a rectangular screen even while you are moving the projector.



* For EB-1776W only

Enrich your Presentation Using a Single Projector

Split Screen* allows inputs from two separate sources to be displayed side by side on the same screen. In a video conference, for example, images of presentation materials and remote participants can be shown simultaneously.

* For EB-1761W/1771W/1776W only



Create Compelling PC-free Presentations

Now you can deliver PC-free presentations anytime. This projector series supports a wide range of content formats, including PDF*, JPEG, BMP, GIF, PNG, EasyMP Slide Converter and Motion JPEG. Simply save your files in a USB memory, then plug and play.

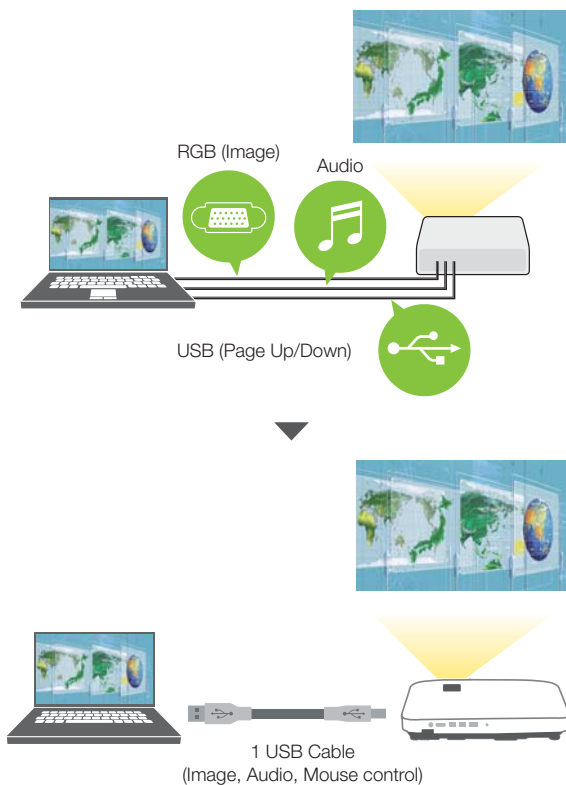


* For EB-1761W/1771W/1776W only

Enjoy Hassle-Free Presentation

USB 3-in-1 display

Designed to better assist the way you present or teach, this series allows control, image and sound transmission from a computer to the projector via a single USB cable, eliminating the need for multiple complicated cabling. With the mouse control function, you can perform mouse operations on your PC by simply using the remote control.



Built-in speaker

A built-in speaker eliminates the need to connect to an external speaker. Its quality output is clear enough to fill the room – making this projector your perfect partner in presentations.

Extend your Presentation Capability

With the iProjection application for both iOS and Android, wireless projection from a smart device is made possible.* This feature supports various files and allows you to present your smartphone contents with ease. It also lets you use other touch-screen operations, such as flicking to turn pages and pinching to zoom in or out.



* For EB-1761W/1771W/1776W only

In iProjection, projector profile search, multi-screen display, distribution function, audio transfer, movie file transfer, interrupt connection disabling and encryption data transfer capabilities are not supported.

Secure your Projector from Unauthorised Use

Protected setting

This series allows you to lock the control panel buttons to prevent unauthorised use or accidental changes to your fixed settings.

Kensington lock

This feature lets you lock your projector to a permanent fixture to prevent theft.



Password protect

Should the projector be stolen, the password function shuts down the projector completely after 30 incorrect attempts. Even if the correct password is eventually entered after these attempts, the projector will still not function.

Eco Features

- Equipped with a short arc lamp engineered to maximise light usage and power efficiency
- Uses just 0.44 W of power in standby mode
- Projector optics employ lead-free lenses
- Unpainted plastic housing reduces the environment impact
- The flame retardants used in the plastic housing do not contain chlorine or bromine

Better Products for a Better Future™

For more information on Epson's environmental programmes, visit www.epson.com/environment

PARTNERS IN PERFECTION

Ultra portable Document Camera ELPDC06



Easily portable; 0.96kg / 2.11lbs
1.92 megapixels with 15fps
4 x digital zoom
USB powered

Desktop Document Camera ELPDC11



2.2kg / 4.85lbs
5 megapixels with 30fps
10 x digital zoom
Bundled with microscope adaptor

Interactive Unit ELPIU01



USB powered
Easy interactive function
Simple and easy set-up

EPSON REVOLUTIONISES PROJECTOR MARKET WITH 3LCD TECHNOLOGY AND LEADS AS WORLD'S NO.1* PROJECTOR BRAND FOR 11 CONSECUTIVE YEARS!

* Based on independent research by Futuresource Consulting

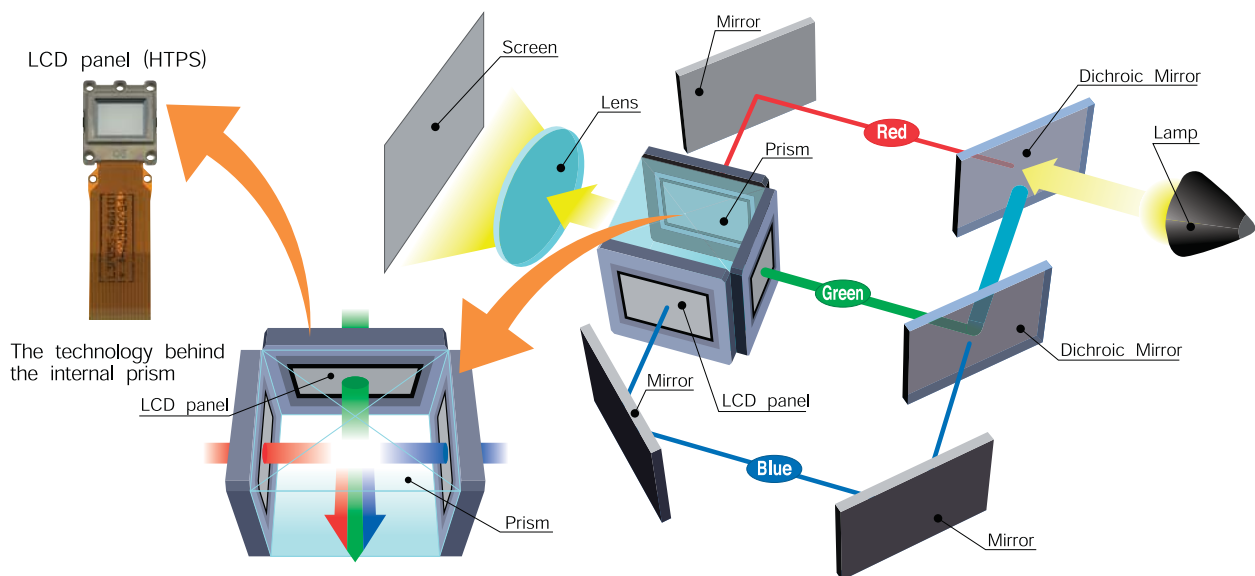
Advantages of 3LCD Projection System

Bright Images and Faithful Colour Reproduction

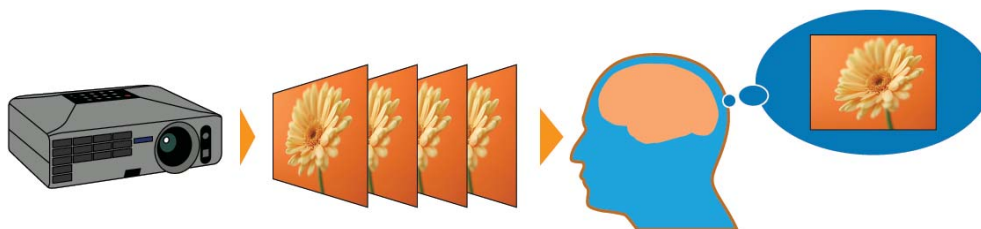
3LCD projectors offer all-time colour (Red, Green and Blue) projection thereby ensuring faithful full colour reproduction. This is suitable for projection of colour intensive images such as videos, photographs and colour charts.

Incredible Details

3LCD projectors are able to produce an unparalleled range of grayscale images, which contributes to delivering incredible colour images that are smooth and seamless.



3LCD projector : RGB are projected at the same time, which makes the single composite image easy on the eyes.



** HTPS (High Temperature Poly-Silicon) is an active matrix transmissive LCD. It is extremely small and produces high-quality images.

Gentle on the Eyes

3LCD projectors' images do not suffer from colour break-up (commonly known as the rainbow effect). The projections are easy on the eyes as you will not be affected by any distorted pattern.

3LCD projectors use 3 separate LCD panels to form a continuous image containing all colours (red, blue and green) ensuring smooth video playback, even for rapid-motion images.

Reliable Technology

With more than 70 million 3LCD chips shipped to date, the powerful and road-tested 3LCD projection technology is extremely reliable, and is trusted by many throughout to deliver sharp and true-to-life images.

COLOUR LIGHT OUTPUT

- an easy way to evaluate projector colour output

What is Colour Light Output?

Colour Light Output (CLO) is a specification that provides critical information on a projector's ability to deliver colour. Developed by colour scientists using the same approach as White Light Output (Brightness) measurement, Colour Light Output provides the buyer with additional key information about colour.

Does Brightness measure colour?

No. Current product specifications such as Brightness (or White Light Output), Contrast Ratio and Resolution give no information regarding a projector's ability to reproduce colour. The existing Brightness specification only measures the total amount of White Light projected. It does not measure colour – in fact, many manufacturers artificially boost brightness by adding white light, which dilutes the projector's colour brightness.

Why is Colour Light Output important?

Colour Light Output is critically important because it measures the brightness of Red, Green and Blue. Red, Green and Blue create white when combined in the right proportions. They also comprise the input signal that tells your projector how to reproduce colour images. Beautifully balanced colour is possible when bright Red, Green and Blue combine to produce the brightness equal to White. Colour Light Output provides users with an additional way to evaluate a projector and make more discerning buying decisions.

Is Colour Light Output the same in all projectors?

No. There are vast differences in the Colour Light Output of projectors on the market today. Look at the images below from two competing projectors

3LCD Projector



Image #1*

Brand X



Image #1*



Image #2*



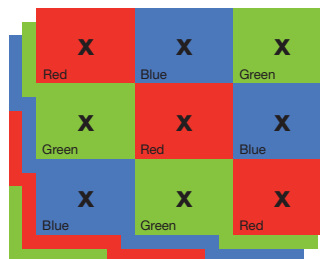
Image #2*

Colour Light Output specification describes the difference in colour between these two projectors.

How is Colour Light Output measured?

X	X	X
X	X	X
X	X	X

Brightness (or White Light Output) measures the total amount of white light projected in lumens on a nine point grid. It does not measure colour.



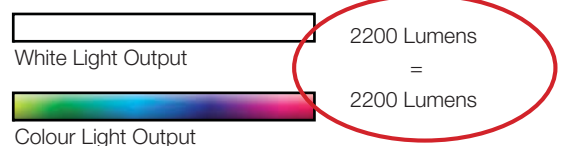
Colour Light Output uses 3 sets of a nine-point grid to measure the primary colours - red, green and blue, using the same approach used to measure White Light Output in lumens.

How should Colour Light Output be used?

Colour Light Output should be used with White Light Output to provide insight into a projector's overall picture quality. Two things to remember:

1. Select High Colour Light Output.
2. Make sure the Colour Light Output equals the White Light Output.

3LCD Projector High CLO



Brand X Low CLO



When selecting a projector, ask for the Colour Light Output measurement.

* Actual photographs of images produced by 2 competing projectors run in default mode. Price, Resolution and Brightness (White Light Output) are the same for both projectors.

MODEL NUMBER	EB-1776W	EB-1771W	EB-1761W	EB-1751
Projection Technology	RGB liquid crystal shutter projection system (3LCD)			
Specifications of Main Parts				
LCD	Size	0.59" with MLA (D8)		0.55" without MLA (D8)
	Native Resolution	WXGA		XGA
Projection Lens	Type	Optical Zoom (Manual) / Focus (Powered)	Optical Zoom (Manual) / Focus (Manual)	
	F-Number	1.58 - 1.7		
	Focal Length	13.52mm - 16.22mm		
	Zoom Ratio	1 - 1.2		
	Throw Ratio	1.04 - 1.26 (Wide - Tele)		1.19 - 1.43 (Wide - Tele)
Lamp	Type	230W UHE	205W UHE	230W UHE
	Life (Normal / Eco)	4,000 hours		
Screen Size (Projected Distance)				
Zoom: Wide	30" - 300" [0.67m - 6.81m]		30" - 300" [0.72m - 7.30m]	
Zoom: Tele	30" - 300" [0.80m - 8.18m]		30" - 300" [0.86m - 8.77m]	
Standard size	60" screen 1.35m - 1.62m		60" screen 1.45m - 1.74m	
Brightness				
White Light Output (Normal / Eco)	3,000lm / 1,700lm		2,600lm / 1,700lm	2,600lm / 1,400lm
Colour Light Output	3,000lm		2,600lm	2,600lm
Contrast Ratio				
2,000:1				
Internal Speaker(s)				
Sound Output	Monaural: 1W x 1			
Keystone Correction				
Vertical / Horizontal	±45° / ±30° (Zoom: Tele)			
Auto Keystone Correction	Vertical / Horizontal	Yes (Horizontal & Vertical) Real Time Distance: 68cm - 226cm	Yes (Vertical only)	
	Vertical / Horizontal	±30° / ±20°		
Connectivity				
Analog Input	D-Sub 15pin	1 (Blue)		
	Component	D-sub 15pin Blue molding (in common with Analog RGB connector)		
	Composite	RCA (Yellow) x 1		
Digital Input	HDMI	1		
Audio Input	Stereo Mini Jack	1		
Others	USB Type A	1 (USB memory / ELPDC06 Document Camera)		
	USB Type B	1 (3-in-1 USB Display)		
Network	Wireless	Yes (ELPAP07)	Optional (ELPAP07)	N/A
Wireless Specifications				
Supported Speed For Each Mode	IEEE 802.11b: 11 Mbps* IEEE 802.11g: 54 Mbps* IEEE 802.11n: 130 Mbps* * Maximum speed and range is achievable when used with same enhanced mode technology. Actual data rates, features and performance may vary depending on your computer system, the environment and other factors.			N/A
Wireless LAN Security	WEP, WPA-PSK(TKIP/AES), WPA2-PSK(TKIP/AES)			N/A
Operating Temperature				
5°C - 35°C <41°F - 95°F> (20% - 80% Humidity)				
Operating Altitude				
0m - 2,286m <0ft - 7,500 ft> (over 1,500m / 4,921ft: with High altitude mode)				
Direct Power On / Off				
Yes				
Start-Up Period				
Less than 7.2 seconds, Warm-up period: 30 seconds				
Cool Down Period				
Instant off or 0 second				
Air Filter	Type	Normal		
	Maintenance Cycle	2,000H		
Power Supply Voltage				
100 - 240 V AC +/- 10%, 50/60 Hz				
Power Consumption (220 - 240V)				
Lamp On (Normal / Eco)	304W / 203W		278W / 203W	304W / 203W
Standby (Network On / Off)	7.7W / 0.44W			
Dimension Excluding Feet (D X W X H)				
210mm x 292mm x 44mm				
Weight	Approx. 3.77lbs. / 1.71kg		Approx. 3.66lbs. / 1.66kg	
	Approx. 3.77lbs. / 1.71kg		Approx. 3.66lbs. / 1.66kg	
Fan Noise (Normal / Eco)				
40 dB / 30dB		37 dB / 30dB		40 dB / 30dB

Supplied accessories

Power Cable: 3.0m
 Computer Cable: 1.8m D-sub 15pin (Male) - D-sub 15pin (Male)
 USB Cable: 3.0m, USB A/USB B 1.8m, USB A/USB B (EB-1751)
 Remote Control: Compact type
 Battery: Manganese AA x 2
 Wireless LAN Unit: Yes (ELPAP07) (EB-1776W only)
 Bundled Software: EPSON Projector Software (CD-Rom)
 Soft Carrying Case
 Password Protect Sticker
 User's Manual Set
 Quick Wireless Connection USB Key: Attached (ELPAP09) (EB-1776W only)

Optional accessories

Replacement Lamp: ELPLP65
 Air Filter Set: ELPAPF31
 Wireless LAN Unit: ELPAP07 (EB-1776W/1771W/1761W)
 Quick Wireless Connection USB Key: ELPAP09 (EB-1776W/1771W/1761W)
 USB Document Camera: ELPDC06
 Ceiling Mount: ELPMB23
 Setting plate for ELPMB23: ELPPT01

EB-1776W/EB-1771W/EB-1761W/EB-1751



EPSON and EXCEED YOUR VISION are registered trademarks of Seiko Epson Corporation.

All other product names and other company names used herein are for identification purposes only and are the trademarks or registered trademarks of their respective owners.

EPSON disclaims any and all rights in those marks. Projected images shown herein are simulations. The actual product design and contents may vary. Specifications are subject to change without notice.

Apple, iPad, iPhone, iPod touch, and iTunes are trademarks of Apple Inc., registered in the U.S. and other countries. App Store is a service mark of Apple Inc.

Android is a trademark of Google Inc.